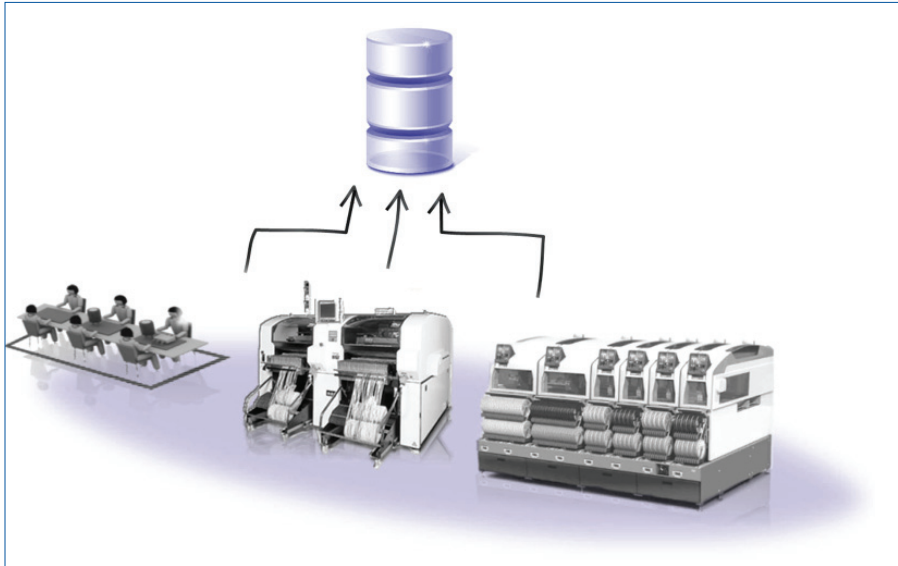


Valor MSS Material Traceability

Manufacturing

Component Level Traceability for Full Compliance and Limited Risk

D A T A S H E E T



Valor MSS Material Traceability provides complete coverage from the stockroom to final assembly. At each step materials used in a product are traced according to supplier batch, unique reel, work-order and process step in the routing.

MAJOR BENEFITS:

- Assures compliance to customer and regulatory requirements
- Brand protection and cost reduction by minimizing impact of product recalls
- Insures high quality from component suppliers, reducing cost
- Commonality from a single platform across multiple machine types
- Efficient data storage and fast query results minimizes operator time
- Assures traceability coverage of all components that could be in a product
- Works together with Valor MSS Business Intelligence for more customized queries

Overview

The Valor® MSS Material Traceability module provides an exact record of material used in the production of a particular unit. The solution provides data across all assembly work cells (both automated and manual) and captures additional information including the operator working at the time, and the program or recipe running on the equipment. The comprehensive coverage with one traceability platform across the entire PCB assembly factory assures that there are no gaps in the traceability coverage. Every component that could be in the production of an assembly unit is covered.

Key Features

- Registers which components are used on each produced panel
- Registers when the panel is produced on each machine
- BOM information is saved so that the reference designators are associated to each part, and can be used for traceability reporting.
- All related part information, i.e. part number, lot no., vendor, date code, etc., is saved in the database.
- Traceability data is stored for multiple reels (for a particular panel) in the case where a reel or part is changed during production
- Provides Exact Trace (a placed component always points a single reel) for selected machine types

Traceability Begins with Registration of Incoming Materials

As components are received in the stock area, the Valor MSS Foundation module provides the application to gather all trace data from the vendor bar codes and register these data in the MSS database. From this point forward, the trace data is linked to the specific reel (or other supply form) serial number.

Traceability with Mass Assembly

During factory assembly on the SMT lines, it is crucial to capture the PCB and/or panel ID with automation from machine or conveyor mounted bar code scanners. Valor MSS Material Verification solutions provides a flexible means to capture this data while simultaneously link the PCB ID to the specific reel ID(s) used in the assembly of the board. MSS Traceability solutions use advanced technology to link the component trace data not only to the PCB ID and work order, but also to the individual component location reference designators on each board. In many cases, due to splicing and feeder replenishment, there can be more than one reel ID associated to the board. The Valor MSS Traceability solution captures all possible reel IDs that could have provided components assembled on any given product assembly.

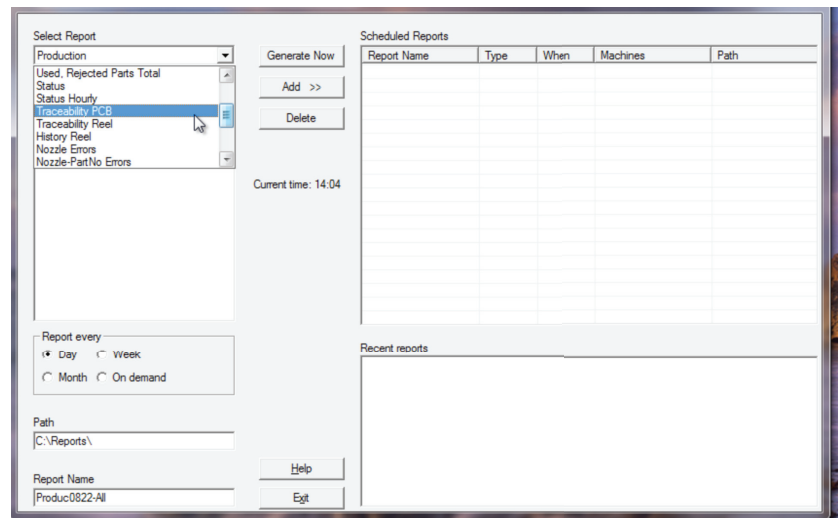
Traceability with Manual Assembly

Complete traceability coverage requires that all manual work cells, where components are applied to the assembly, be included. Valor MSS Material Traceability uses hand scanners to trace all components applied, or replaced, by hand. This include assembly at both the board level and also the system level. In this way, the Valor MSS Traceability solution can assure that no material is applied to the product without being traced. Wireless hand held PDA/scanners or standard hand scanners can be deployed as needed.

Coverage for manual assembly operations also contributes to the total traceability requirements of many companies where a complete build record is demanded. The Valor MSS suite provide total traceability coverage, both from a process view and from a material view. Process traceability requires the Valor MSS Quality Management solution.

Traceability Reports Made Easy

Valor MSS Material Traceability module makes creating a trace report fast and easy. The report engine allows the user to create automated reports repeated on specific intervals, and to specify many different types of reports. For example the Traceability Reel report shows a list of all the PCB IDs that included material from that reel. If a reel (or other supply form) is found to contain bad parts it can be determined very quickly which boards need to be found and repaired. This greatly simplifies and minimizes the risk to product recalls. Working in the other direction is just as easy. For any given PCB ID, a report is generated that shows a complete list of all reel IDs with the linked vendor data, used on that product. There are many different types of reports available and complete custom reporting can be achieved through the Valor MSS Business Intelligence module.



The traceability report generator automates the delivery of standard reports as frequently as you need

For the latest product information, call us or visit: www.mentor.com/valor

©2012 Mentor Graphics Corporation, all rights reserved. This document contains information that is proprietary to Mentor Graphics Corporation and may be duplicated in whole or in part by the original recipient for internal business purposes only, provided that this entire notice appears in all copies. In accepting this document, the recipient agrees to make every reasonable effort to prevent unauthorized use of this information. All trademarks mentioned in this document are the trademarks of their respective owners.

Corporate Headquarters
Mentor Graphics Corporation
8005 SW Boeckman Road
Wilsonville, OR 97070-7777
Phone: 503.685.7000
Fax: 503.685.1204

Silicon Valley
Mentor Graphics Corporation
46871 Bayside Parkway
Fremont, CA 94538 USA
Phone: 510.354.7400
Fax: 510.354.7467

Europe
Mentor Graphics
Deutschland GmbH
Arnulfstrasse 201
80634 Munich
Germany
Phone: +49.89.57096.0
Fax: +49.89.57096.400

Pacific Rim
Mentor Graphics (Taiwan)
Room 1001, 10F
International Trade Building
No. 333, Section 1, Keelung Road
Taipei, Taiwan, ROC
Phone: 886.2.87252000
Fax: 886.2.27576027

Japan
Mentor Graphics Japan Co., Ltd.
Gotenyama Garden
7-35, Kita-Shinagawa 4-chome
Shinagawa-Ku, Tokyo 140-0001
Japan
Phone: +81.3.5488.3033
Fax: +81.3.5488.3004



Sales and Product Information
Phone: 800.547.3000
sales_info@mentor.com

North American Support Center
Phone: 800.547.4303